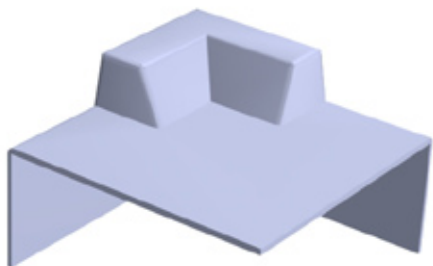


## C1,2,3,4,5,6 Corners and Closures

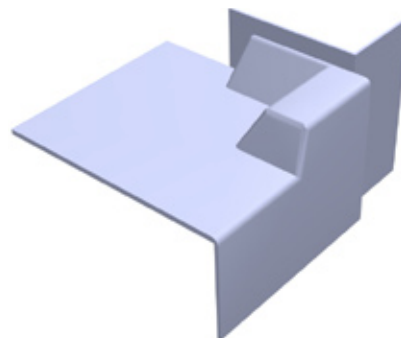
### Application instructions- Corners

Application is the same for all the corner trims listed below. The trim should be nailed through the trim to the deck at each end and in the middle. The joints between the trim and the corner should be sealed with a thin line of PU trim adhesive, a moist finger can be used to wipe the adhesive, ensuring it seals the entire joint. The joint is then bandaged over.

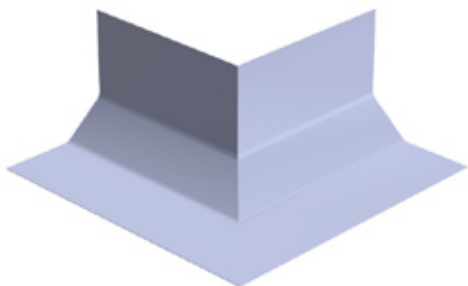
#### Corner trim range



C1 Universal external corner- Compatible with A200 and B260 when used on an adjoining edge.



C2 Fillet to trim corner- For at junction of flat roof and abutting wall. Compatible with A200, B260 & D260.



C3 Internal/External fillet corner- Preformed internal/external corner for use with D260. Avoids mitring in situ.

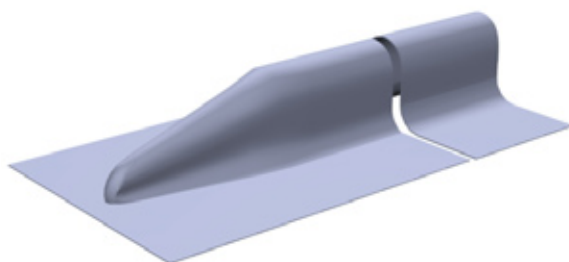


C4 Universal internal corner- Pre-formed internal left and right hand corners. Compatible with A200 & B260.

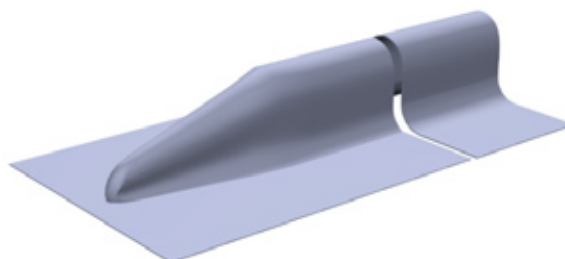
### Application instructions- Closures

Application is the same for all the closure trims listed below. Apply a thin line of PU adhesive to the end of the rolled trim and over lap the closure by at least 50mm and press the trims together firmly to ensure that the adhesive seals the gap nail the trim to the decking and apply roof covering over the completed section.

#### Corner trim range



C5 roof ridge closure- Compatible with E280 expansion joint/ridge trims



C6 rolled rib closure- Compatible with E35 simulated lead roll trims.