



# Process Chart



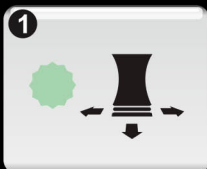
## 1. Remove Defect

## 2. Compounding

## 3. Finishing

## Optional finish for cured paint

DUST

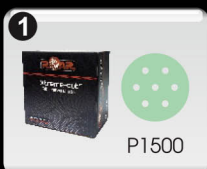


DB35  
+  
DR-P2000  
Denbbing Rose



XGL67H - P1500/  
XGL30H - P1500  
Abrasive Disc

ORANGE PEEL

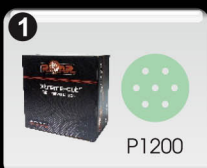


XGL67H - P1500/  
XGL30H - P1500  
Abrasive Disc



XGL67H - P2000/  
XGL30H - P2000  
Abrasive Disc

PAINT RUN



XGL67H - P1200/  
XGL30H - P1200  
Abrasive Disc



XGL67H - P2000/  
XGL30H - P2000  
Abrasive Disc



3" Central Vacuum  
Orbital Sander  
Part No.: CVS-RS3



6" Central Vacuum  
Orbital Sander  
Part No.: CVO-RS6

### 610 Extreme Cut



Product Size: 1kg  
Part No.: 610-10



6" Compounding Foam Hard  
Part No.: 610CFH

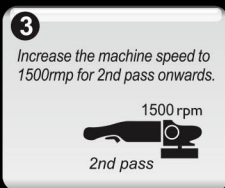
Backing Plate  
Part No.: 614BP



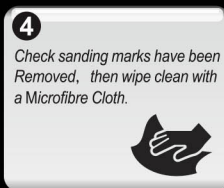
1 Add a suitable amount of compound to the surface



2 Run the machine at 800rpm for the 1st pass



3 Increase the machine speed to 1500rpm for 2nd pass onwards

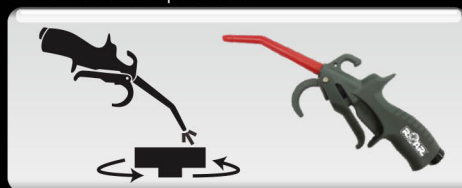


4 Check sanding marks have been removed, then wipe clean with a Microfibre Cloth

- MS ---- ✓
- HS ---- ✓
- UHS --- ✓
- SR ----- ✓
- OEM ---- ✓

### Tips:

A controlled jet of air from Roar's air blow gun can be directed at the foam pad to remove excess dried compound. This eliminates abrasive objects damaging the pad during cleaning. Ensure protective goggles and mask are used for this process.



4" Air Blow Gun Part No.: RA-ABG4

### 620 Extreme Fine Grade



Product Size: 1kg  
Part No.: 620-10



6" Waffle Orange Foam  
Part No.: 620WP

6" Waffle Black Foam  
Part No.: 620PF

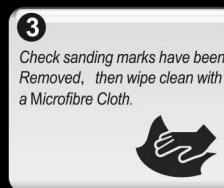
Backing Plate  
Part No.: 614BP



1 Add a suitable amount of compound to the surface



2 Speed the polishing machine up to 1500-2000rpm



3 Check sanding marks have been removed, then wipe clean with a Microfibre Cloth

- MS ---- ✓
- HS ---- ✓
- UHS --- ✓
- SR ----- ✓
- OEM ---- ✓

**Applicator**

6" Waffle Orange Foam,  
Part No. 620WP

- UHS ----- ✓
- SR ----- ✓
- OEM ----- ✓

**Applicator**

6" Waffle Black Foam,  
Part No. 620PF

- MS ----- ✓
- HS ----- ✓

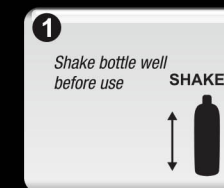
### 630 Extreme Wax



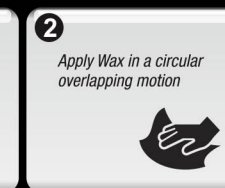
Product Size: 1kg  
Part No.: 630-10



Roar Edgeless  
Finishing Cloth  
Part No.: FC/1



1 Shake bottle well before use



2 Apply Wax in a circular overlapping motion



3 Allow to dry



4 Buff with a Clean Microfibre Cloth

